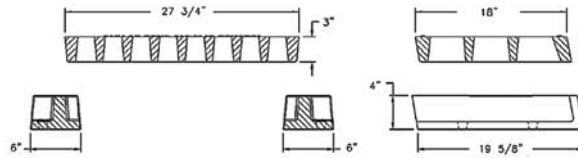


7091 CATCH BASIN INLET

Heavy duty
 3-piece unit
 Approximate 175 sq. in. open area
 "DUMP NO WASTE!" lettering and fish image



7140 CATCH BASIN CURB INLET

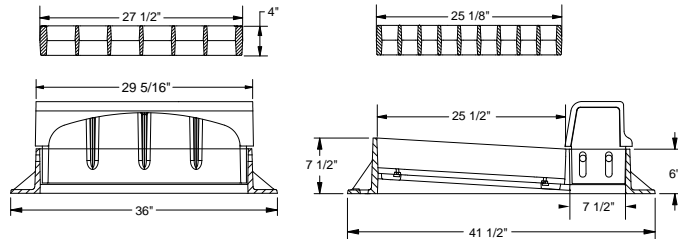
Heavy duty
 With M1 ductile iron grate and
 Type T1 unmountable back
 Curb back height adjusts 6" to 10"
 NY State DOT — Type F1, G1, CU1 & CM1



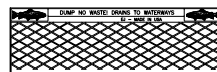
Type M1 Grate (G1)
 Approx. 412 sq. in.
 open area



Galvanized Steel Reticuline Grate (G1)



Type T1 Back
 Unmountable back (CU1)
 with "DUMP NO
 WASTE!" lettering and
 fish image



Type T2
 Mountable back (CM1)